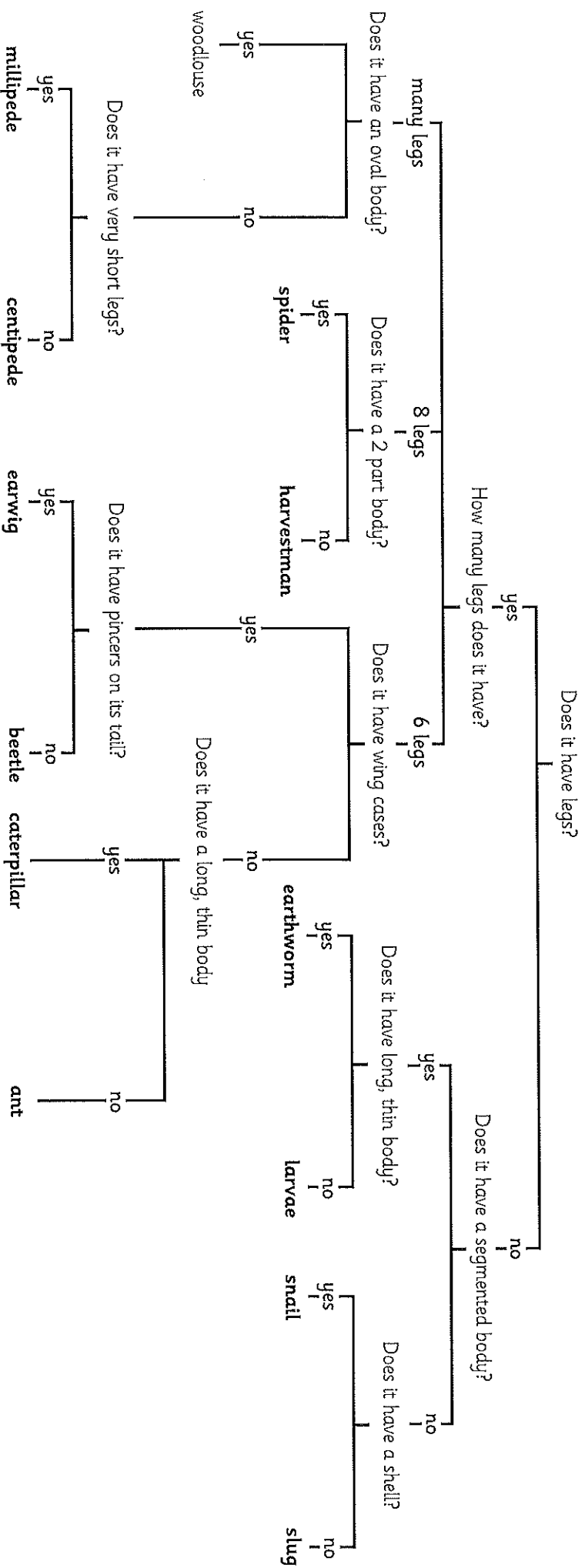


Invertebrates Classification Key



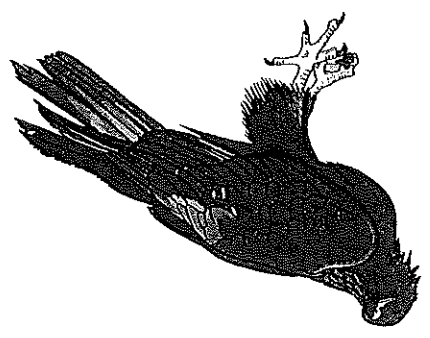
planit

Desert Habitat Classification

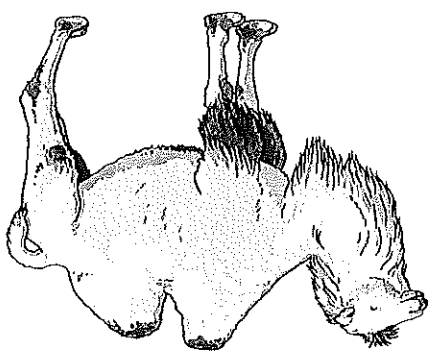
Fill in the table with ticks and crosses to show the characteristics of each living thing.

	cactus	ostrich	scorpion	succulent	meerkat	tarantula	eagle	camel
Is it a plant?								
Does it have a tail?								
Is it a vertebrate?								
Does it have spines?								
Does it have a long neck?								
Does it have feathers?								
Does it have hooves?								

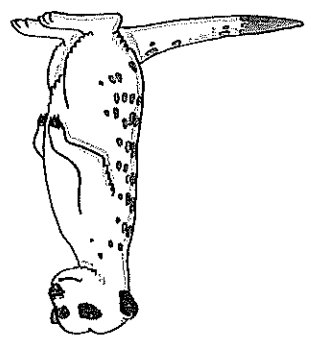
eagle



camel



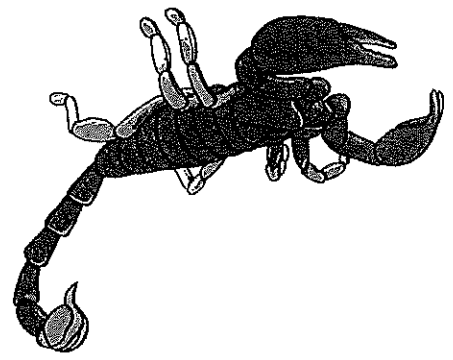
meerkat



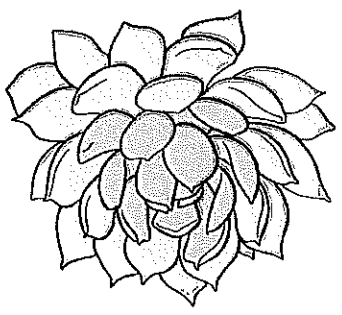
tarantula



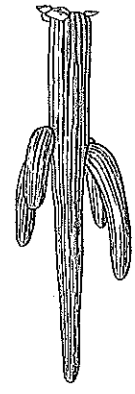
scorpion



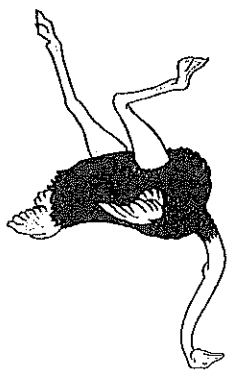
succulent



cactus



ostrich



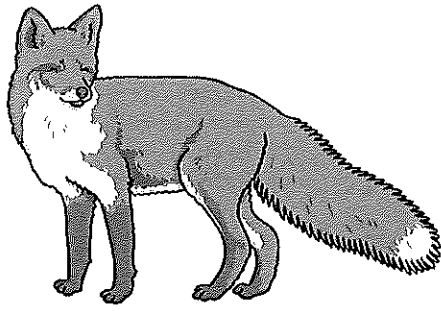
Does it have a long neck?	Does it have feathers?	Does it have hooves?	Does it have spines?	Yes	Yes	Yes	No
Is it a plant?	Does it have a tail?	Is it a vertebrate?	Does it have spines?	Yes	Yes	Yes	No
				Yes	Yes	Yes	No
				Yes	Yes	Yes	No
				Yes	Yes	Yes	No
				Yes	Yes	Yes	No



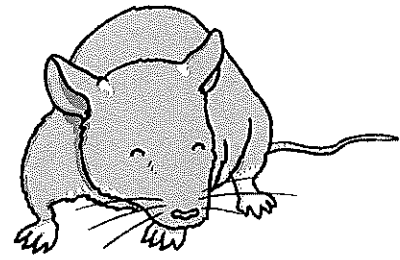
Urban Habitat Classification

Fill in the table with ticks and crosses to show the characteristics of each living thing.

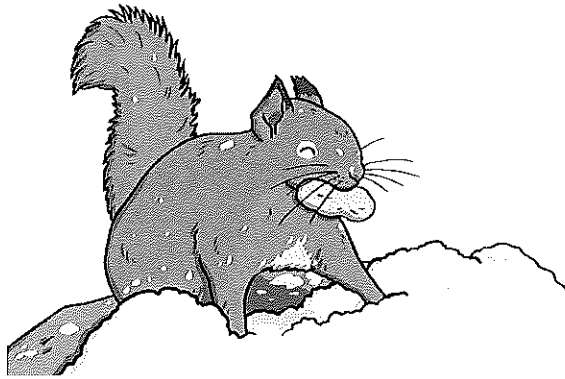
	fox	rat	squirrel	pigeon	slug	woodlouse	dandelion	nettle
Is it a plant?								
has it got legs?								
Is it a vertebrate?								
Does it climb trees?								
Does it have a bushy tail?								
Does it have feathers?								
Does it have a yellow flower?								



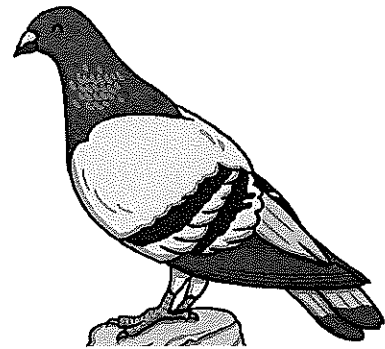
fox



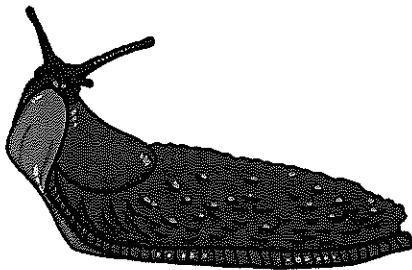
rat



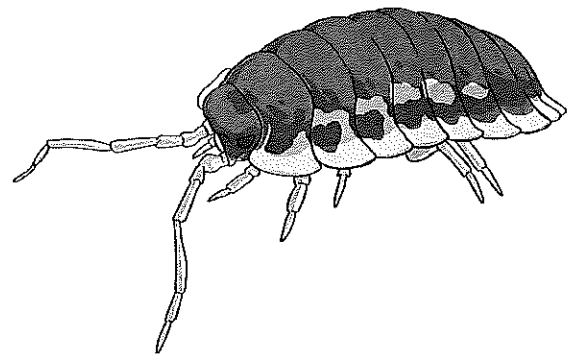
squirrel



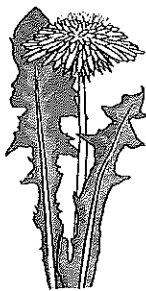
pigeon



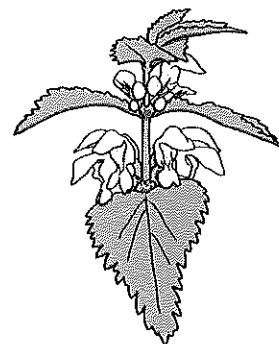
slug



woodlouse



dandelion



nettle

Is it a plant?		Does it have a bushy tail?	
Has it got legs?		Does it have feathers?	
Is it a vertebrate?		Does it have a yellow flower?	
Does it climb trees?		Yes	Yes
Yes	Yes	Yes	Yes
Yes	No	No	No
No	No	No	No

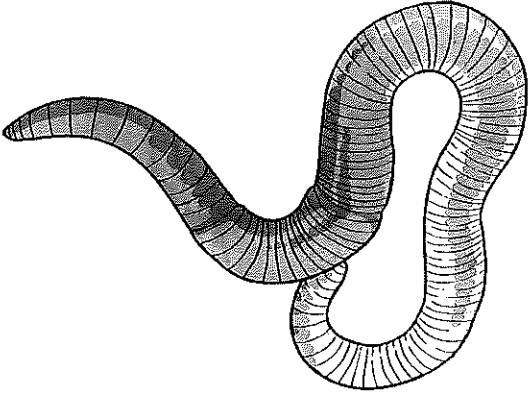


Woodland Habitat Classification

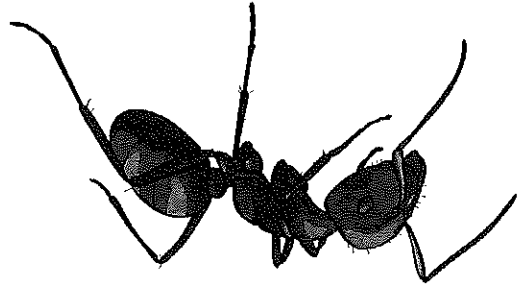
Record which living thing has each characteristic by putting a tick or a cross in the table. Write your own questions in the last two boxes of the table.

	bluebell	badger	owl	woodpecker	hedgehog	oak tree	ant	earthworm
Does it have wings?								
Is it a vertebrate?								
Does it have legs?								
Does it have a trunk?								
Does it have spines?								

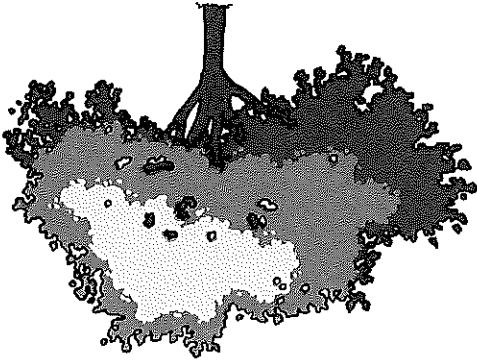
earthworm



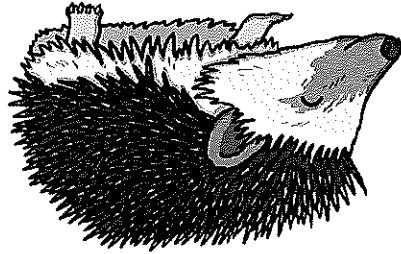
ant



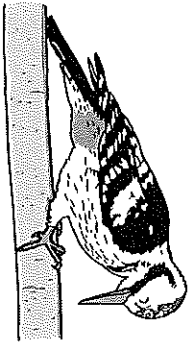
oak tree



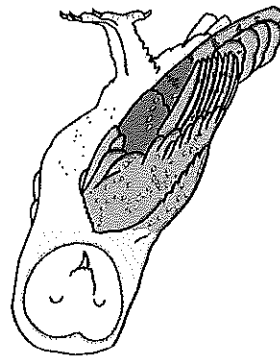
hedgehog



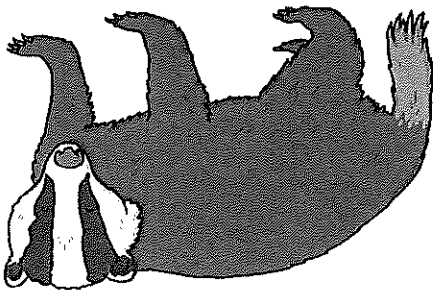
woodpecker



owl



badger



bluebell

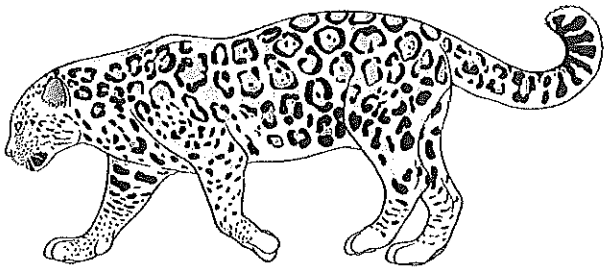




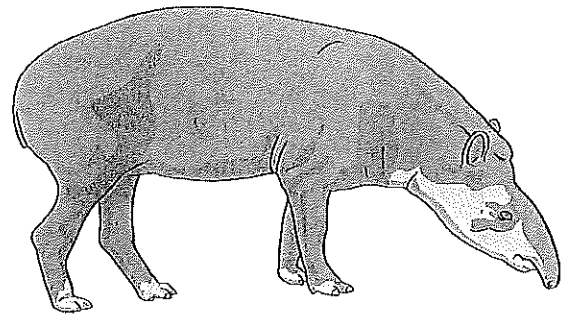
Rainforest Habitat Classification

Record which living thing has each characteristic by putting a tick or a cross in the table. Write your own questions in the last two boxes of the table.

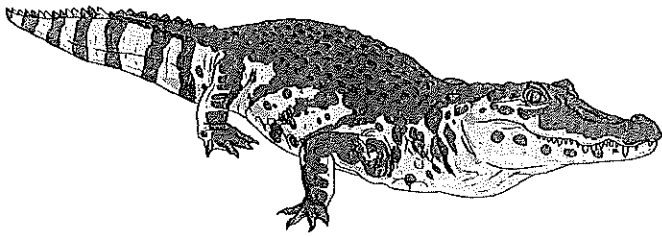
	jaguar	tapir	toucan	fruit bat	hummingbird	tree frog	anaconda	caiman
Does it lay eggs?								
Does it have scales?								
Does it have wings?								
Does it have a beak?								
Does it have legs?								



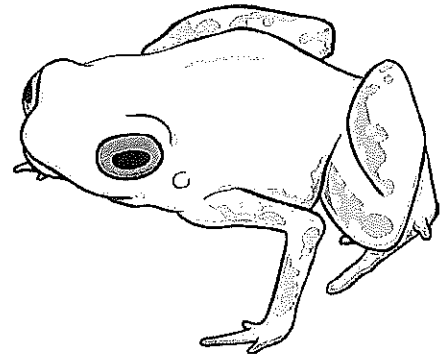
jaguar



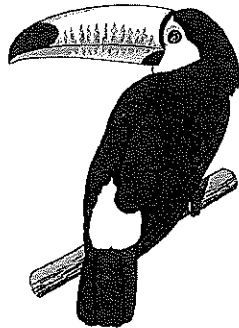
tapir



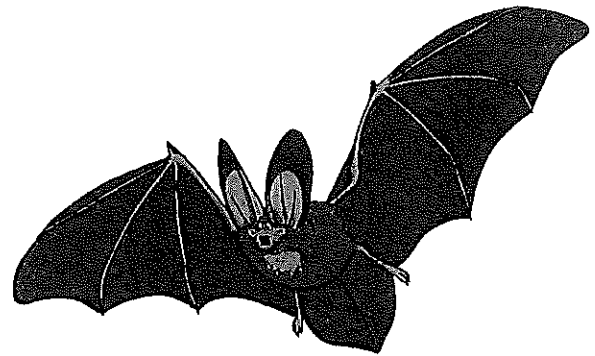
caiman



tree frog



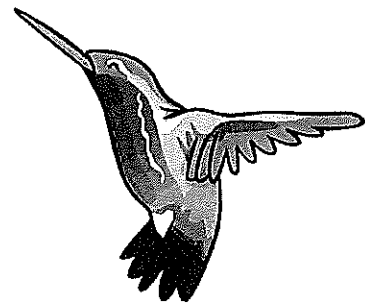
toucan



fruit bat



anaconda



hummingbird

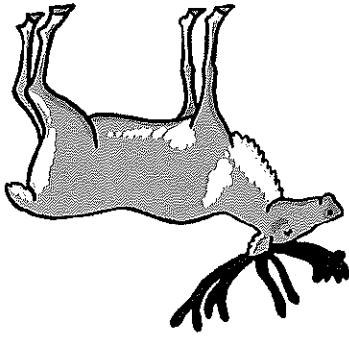


Arctic Habitat Classification

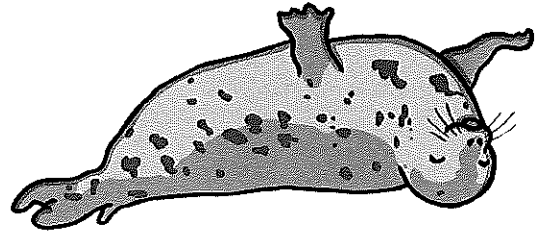
Record which living thing has each characteristic by putting a tick or a cross in the table. Write your own questions in the last four boxes of the table.

	polar bear	walrus	beluga whale	narwhal	puffin	harp seal	snowy owl	reindeer
Does it have horns or tusks?								
Does it have feathers?								
Does it live in the ocean?								

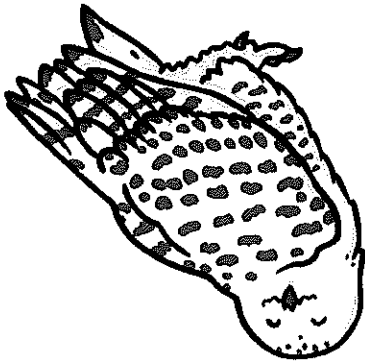
reindeer



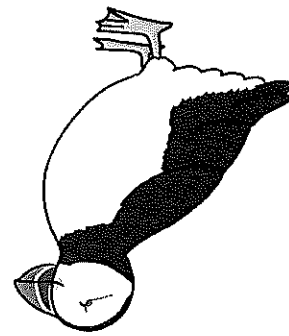
harp seal



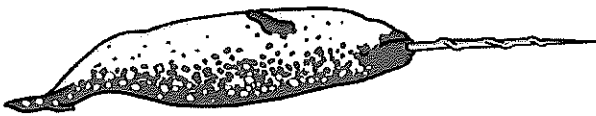
snowy owl



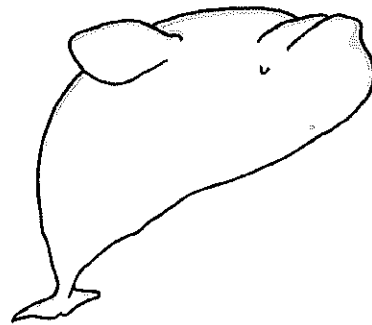
puffin



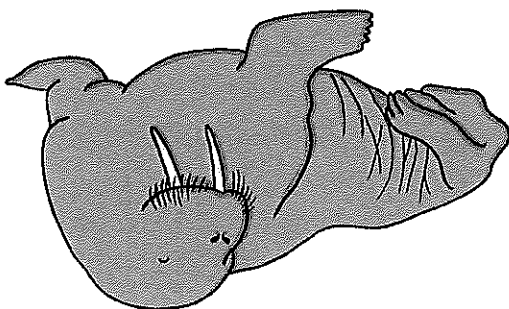
narwhal



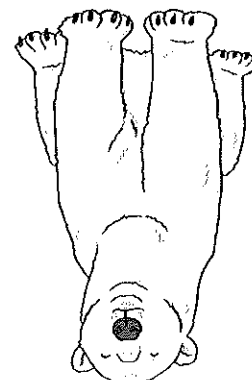
beluga whale



walrus



polar bear



Spring Timetable 2020

	Monday	Tuesday	Wednesday	Thursday	Friday
4D	Monday	Tuesday	Wednesday	Thursday	Friday
9:00 - 9:15am	Registration	Registration	Registration	Registration	Registration
9:15 - 9:40am	Assembly	SEAL/French	Reading Journal	Assembly	Assembly
9:40 - 10:40am	Maths	English	P.E./ipads	ipads/PHSE	English
10:40 - 10:55am	Break	Break	Break	Break	Break
11:00 - 12:00am	English	Maths	English	Maths	Maths
12:00 - 1:00pm	Lunch	Lunch	Lunch	Lunch	Lunch
1:00 - 1:30pm	Guided Reading	Guided Reading	Guided Reading	Guided Reading	History
1:30 - 2:30pm	R.E	Science	Maths	P.E	French
2:30 - 3:30pm	Science	Science	Assembly	Art	Guided Reading